

ON/OFF Constant Voltage LED Driver

UT-20-xx-IP44



Features



- Independent 16mm ultra thin design
- Moisture protection solution for cabinets and mirror cabinets
- Flicker-free, complying with CE Erp directive
- Primary and secondary sides come with leads
- Protections: opencircuit, shortcircuit, overload, overtemperature
- DC input compatible (176-280Vdc)
- SELV equivalent
- Suitable for protection class I & II luminaires
- Protection class II
- IP44 design



Selection Guide

Model No.	Nominal Voltage (V)	Nominal Current (A)	Power Factor (λ)	THD (%)	Max. Output (W)	Output Current (A)	Output Voltage (V)	Efficiency Full Load (%)
UT-20-12-IP44	220-240	0.16	0.80C	55	20	0-1.67	12	83
UT-20-24-IP44	220-240	0.16	0.80C	55	20	0-0.84	24	83

Note: 1. The product picture is for reference only. For details, please refer to the actual product.

2. All parameters NOT specially mentioned are measured at 25°C of ambient temperature, 230VAC input, 50Hz, full load and after warm-up.

Input Parameters

Parameter	Condition	Min.	Typ.	Max.
Input Voltage Range	AC Input	198VAC	230VAC	264VAC
	DC Input	176VDC	--	280VDC
Input Frequency Range	AC Input	47Hz	50/60Hz	63Hz
No-load Power Consumption	@230VAC, 50Hz	--	--	0.5W
Inrush Current	Cold start@230VAC, 50Hz, full load	15A/200us		
Max.units Per Circuit Breaker*	B10	11		
	B13	15		
	B16	18		
	B20	23		
	C10	24		
	C13	32		
	C16	39		
	C20	49		

Note: *These are max. values calculated out of inrush current! Please consider not to exceed the maximum rated continuous current of the circuit breaker. Calculation uses typical values from ABB series S200 as a reference. Actual values may differ due to used circuit breaker types and installation environment.

ON/OFF Constant Voltage LED Driver

UT-20-xx-IP44



Output Parameters

Parameter	Condition	Min.	Typ.	Max.
Output Accuracy	@230VAC, 50Hz, full load	--	±5%	--
Ripple & Noise*	Low frequency<120Hz.@230VAC, 50Hz, full load	--	--	10%
Pst LM	@230VAC, 50Hz, full load	--	--	1
SVM	@230VAC, 50Hz, full load	--	--	0.4
Galvanic Isolation	Isolated			
Over-Temperature Protection (OTP)	Auto-Recovery If Fault Is Removed			
Short-Circuit Protection (SCP)	Auto-Recovery If Fault Is Removed			
Over-Current Protection (OCP)	Auto-Recovery If Fault Is Removed			

Note: *Ripple & noise are measured at 20MHz of bandwidth by using a 12" twisted pair-wire terminated with a 0.1uF & 47uF parallel capacitor.

General Parameters

Parameter	Condition	Value
Ambient Temperature Range t_a		-20 ... +45°C
Maximum Case Temperature t_c	Measured on t_c point indicated of the product label	UT-20-12 IP44 90°C
		UT-20-24 IP44 85°C
Max.case Temp.In Fault Condition		110°C
Storage Temperature Range		-20...70°C
Relative Humidity	Non condensing	5...85%
Surge Transient Protection	L-N L/N-PE	1 2kV
Environmental Rating		Indoor
IP Rating		IP44
Mains Switching Cycles		>100,000
Expected Lifetime	At t_{cmax} , 0.2%/1,000h failure rate	50,000h

Physical Parameters

Housing Material	PC
Type of Connection	Cable
Dimensions(LxWxH)	103x36x16mm
Mounting Hole Spacing	91x28mm
Weight	96g (Typ.)

Standards*

Safety Standards	EN 61347-1, EN 61347-2-13, EN 62493
Performance	EN 62384
EMC Standards	EN 55015, EN 61000-3-2, EN 61000-3-3, EN 61547

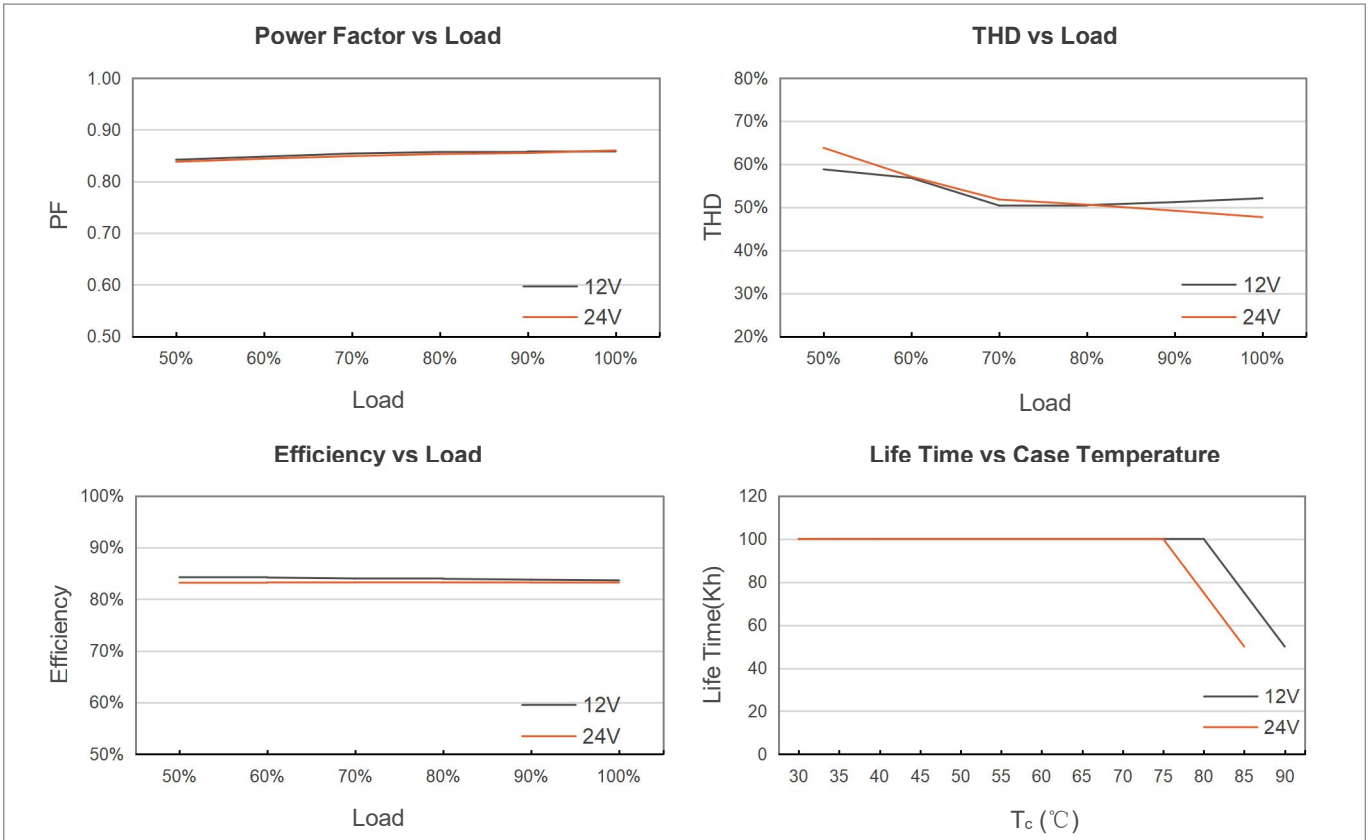
Note: *The above refers to the standards the product design complies with. For specific certifications obtained, please refer to page 1.

ON/OFF Constant Voltage LED Driver



UT-20-xx-IP44

Product Characteristic Curve



Appearance of size

