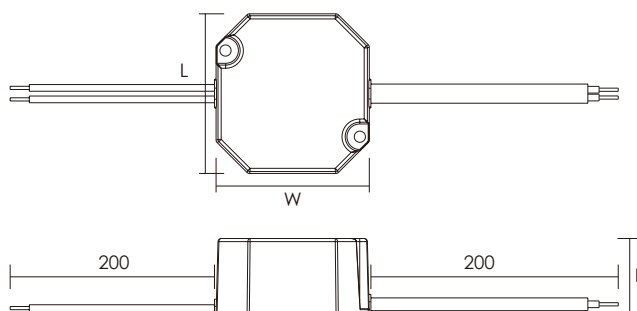
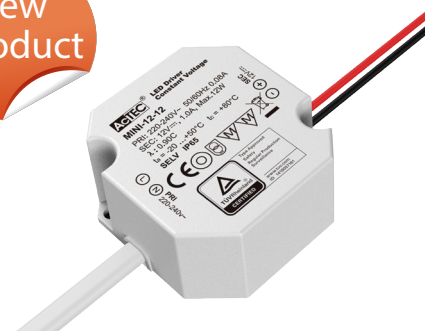


Mini Series

Constant Voltage LED Driver

Features:

- Super compact design
- Analogue flicker-free
- Primary and secondary sides come with leads
- Protections: opencircuit, shortcircuit, overload, overtemperature
- SELV equivalent
- Protection class II
- Driver for built-in use
- Sealed by glue inside, which can strengthen the protection for luminaries required by waterproof and moistureproof
- IP65 design



Parameters:

Model No.	Input voltage (V)	Max. output (W)	Output voltage (V)	Output current (A)	Power factor (λ)	Efficiency full load (%)	No-load power (W)	Ambient temperature ta ()	Max. casing temperature tc ()	Isolation	Dimensions LxWxH (mm)	Weight (g)
MINI-12-12	220-240	12	12	0-1.0	0.90C	80	<0.5	-20...+50	80	SELV	50x48x24	92
MINI-12-24	220-240	12	24	0-0.5	0.90C	82	<0.5	-20...+50	80	SELV	50x48x24	92



CB CE IP65