

SOLID STATE 4-8-16 RELAY MODULES, PITCH 3,5mm

Segnale di comando: 15-30Vcc per moduli a 4-8-16 relè

Drive signal: 15-30Vdc for 4-8-16 relay modules

Portata in uscita 2A - 60Vcc / 3A - 240Vca per moduli a 4-8-16 relè

Output rate 2A - 60Vdc / 3A -240Vac for 4-8-16 relay modules

Le caratteristiche di uscita sono indicate per carichi resistivi (AC1)

Output features are for resistive loads (AC1)

Uscita su contatto normalmente aperto a semiconduttore per moduli a 4-8-16 relè

Output semiconductor normally open contact for 4-8-16 relay modules

Led verde indicazione presenza alimentazione - green led for power "ON" indication

Led gialli, per ciascun canale, indicazione relè eccitato

Yellow led for "ON" indication on each channel

Interfacce per carichi V DC equipaggiate con SSR a transistor e commutazione istantanea

Interfaces for DC loads are equipped with transistor SSR, instant switching

Interfacce per carichi V AC equipaggiate con SSR a triac e commutazione Zero Crossing

Interfaces for AC loads are equipped with triac SSR, Zero Crossing switching

Connessioni di ingresso e di uscita: morsettiere a vite per conduttori diam. max 2,5mm²

(versione estraibile opzn)

Input and output connection: screw terminals for leads max diam. 2,5mm²

(pluggable terminals optn.)

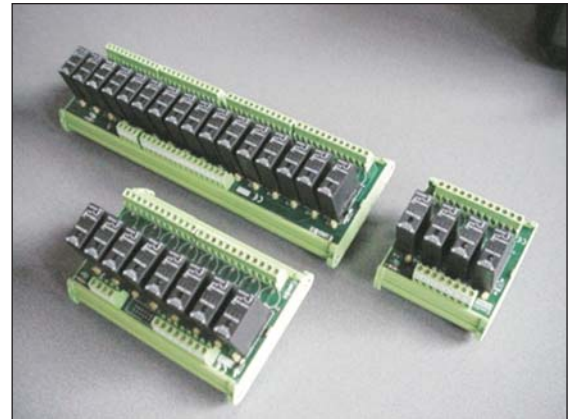
Diodo di sicurezza, contro inversione polarità alimentazione

Diode for polarity reversal protection

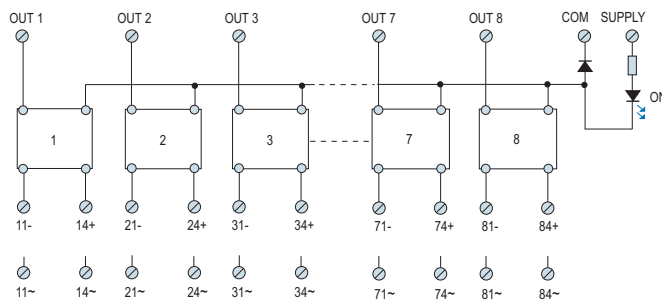
Supporto in materiale autoestinguente UL 94-V0 - selfextinguishing UL 94-V0 support

Esecuzione per aggancio su barra DIN EN5002 e EN50035

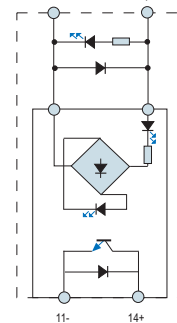
DIN rail mounting for EN5002 and for EN50035 type



SCHEMA A BLOCCHI MODULI 8 USCITE
8 OUTPUT MODULES BLOCK DIAGRAM

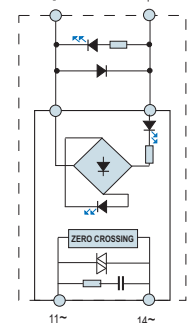


RELE' STATICO / USCITA DC
SOLID STATE RELAY / DC OUTPUT



ET-SSR91-60B ET0911

RELE' STATICO / USCITA AC
SOLID STATE RELAY / AC OUTPUT



ET-SSR21-3240B ET0925

COME ORDINARE - HOW TO ORDER

Sigla Part Number	Codice Code	Comando Drive signal	Uscita Output	Dimensioni Dimensions	Descrizione Description
ET-MSZ04/24DC/60DC/2	ET2900	24 VDC	60 VDC - 2A	79 x 92 x 74 mm	Modulo 4 relè statici per carichi in VDC 4 static relays module for VDC loads
ET-MSZ08/24DC/60DC/2	ET2910	24 VDC	60 VDC - 2A	137 x 92 x 74 mm	Modulo 8 relè statici per carichi in VDC 8 static relays module for VDC loads
ET-MSZ16/24DC/60DC/2	ET2920	24 VDC	60 VDC - 2A	272 x 92 x 74 mm	Modulo 16 relè statici per carichi in VDC 16 static relays module for VDC loads
ET-MSZ04/24DC/240AC/2	ET2901	24 VDC	240 VAC - 3A	79 x 92 x 74 mm	Modulo 4 relè statici per carichi in VAC 4 static relays module for VAC loads
ET-MSZ08/24DC/240AC/2	ET2911	24 VDC	240 VAC - 3A	137 x 92 x 74 mm	Modulo 8 relè statici per carichi in VAC 8 static relays module for VAC loads
ET-MSZ16/24DC/240AC/2	ET2921	24 VDC	240 VAC - 3A	272 x 92 x 74 mm	Modulo 16 relè statici per carichi in VAC 16 static relays module for VAC loads